



Placement Brochure

Meghe Group of Institutions (MGI)



Yeshwantrao Chavan College of Engineering, Nagpur



Rajiv Gandhi College of Engineering & Research, Nagpur



Dr. Babasaheb Ambedkar College of Engineering & Research, Nagpur



Datta Meghe Institute of Engineering, Technology & Research, Wardha

About Nagpur



Nagpur is the Zero Mile of India, a destination for Tiger Safari and a city of Oranges. It is located in the centre of India and is surrounded by Tiger Sanctuaries and wild life which has become a hot destination for the wild life tourists' the world over.

It has become the educational hub in Central India with reputed Engineering, Medical and Management institutions including AIIMS, IIM and IIIT Nagpur, where the students come to the city from across India with the aspiration of building a great future.

Due to its strategic location it is fast developing as a SMART city, a Logistic Hub and a Warehouse centre for the MNCs in the advent of GST connecting the rest of India like never before. It is well connected by air, road and rail to all major metro cities in India and has the IT Park, MIHAN, International Airport & 5 start hotels in hospitality for the guests and tourists. TCS, Tech Mahindra, Infosys, TAL, Patanjali, Indorama, Persistent Systems have started their operations in IT Park and MIHAN (Multi-modal International cargo Hub & Airport Nagpur).

INDEX

Sr. No	Content	Page No
1	Brochure Objective	02
2	About Meghe Group of Institutions	03
3	Education Umbrella	04
4	Our Inspiration	05
5	Dynamic Leaders	06
6	Domain Presence	07
7	Academic Advisory Board	08
8	Vision Mission	09
9	N & P Governance Chart	10
10	Infrastructure/Facility	11
11	Esteemed Recruiters	13-12
12	MGI Student Development Initiatives	15-16
13	MGI Placements : Few Memorable Moments	17
14	MGI Engineering Institutions	18
15	Yeshwantrao Chavan College of Engineering (YCCE)	19-24
16	Rajiv Gandhi College of Engineering & Research (RGCER)	25-28
17	Datta Meghe Institute of Engineering, Technology and Research (DMIETR)	29-32
18	Dr. Babasaheb Ambedkar College of Engineering and Research (DBACER)	33-36
19	Alumni	37-38
20	Campus Life at MGI	39-40
21	Training and Placement Department	41

Brochure Objective

This brochure symbolizes our gratitude to all our recruiters with whom we intend to entrench our relations to record a sense of appreciation of the trust they have reposed in the MGI brand and we hope for their continued patronage. This brochure is intended to keep all recruiters abreast of the latest at MGI.

We also intend to give our prospective recruiters an overview of MGI. Kindly go through the brochure to discover what moulds a fresh mind into a methodical professional. We will be glad to assist you with further details and statistics to assist you to build human capital and talent. We look forward to a mutually beneficial relationship for a win-win scenario. We would like you to sail through the brochure and have a glimpse of what MGI stands for.

**It is with immense pleasure
Meghe Group of institutions (MGI)
extends you a most cordial
invitation to visit us for campus
recruitment drive
www.mginagpur.com**



Committed | Consistent | Credible

The Meghe Group is having a domain presence in the areas of Education, Health Care, Information Technology, Textile Mill, Banking & Corporate Social Responsibilities. The Meghe Group's Education umbrella includes a Medical Science Deemed University, four Engineering Institutions, Polytechnic, a Management Institution, an Architecture college and twenty three Schools established in last three decades. In order to deliver the commitment of Quality Education to more than 40,000 + Meghe Group students, it has been ensured that all the eligible programs are accredited by the respective accrediting authorities of the Government of India like NBA, NAAC & NABET.

Some of the quality initiatives of Meghe Group from the students and faculty perspective are:

- Formation of National Academic Advisory Board.
- MoUs with the leading Foreign Universities : In US – Purdue University, University of Massachusetts Lowell, Lawrence Technological University, Northern Illinois University, Michigan State University, University of Hartford, in UK – Scotland's Colleges International.
- Visiting Professor Scheme to invite renowned Professors from IITs, NITs & other premier Institutions to advice, teach & mentor Meghe Group students & faculty.
- Mentor Scheme to ensure Quality of projects at Under Graduate & Post Graduate level.
- Role model interaction initiative scheme in which role models from different walks of life interact with the students. On 19th December, 2013 Hon'ble Dr. APJ Abdul Kalam visited Meghe Group under this initiative.
- Internal Academic Audits to ensure Quality Assurance & Quality enhancement.
- Formation of Entrepreneurship Development Cell (EDC) & Industry Institute Partnership Cell (IIPC) at the Institute level.
- Formation of DTEL to ensure the e-content generation as well as utilization of e-resources.
- Organization of International conferences in collaboration with Foreign Universities.
- Excellent Training & Placement Department added by Director Placement and Director Training at the group level with full time Training and Placement Officers of each Technical Institutions to ensure Quality Placements
- Employability Enhancement Program is implemented right from the first year with pre and post assessments from reputed agencies to enhance the employability of the students.
- Appointment of Psychological counselor at the Institute level.
- Formation of Research & Development cell at the group level.

Education Umbrella - Meghe Group

Technical Education

ENGINEERING

- ▶ Yeshwantrao Chavan College of Engineering (YCCE), Nagpur
- ▶ Rajiv Gandhi College of Engineering & Research (RGCER), Nagpur
- ▶ Dr. Babasaheb Ambedkar College of Engineering & Research (DBACER), Nagpur
- ▶ Datta Meghe Institute of Engineering, Technology & Research (DMIETR), Wardha

ARCHITECTURE

- ▶ Shri. Datta Meghe College of Architecture (SDMCA), Nagpur

POLYTECHNIC

- ▶ Shri. Datta Meghe Polytechnic (SDMP), Nagpur

MANAGEMENT

- ▶ Datta Meghe Institute of Management Studies (DMIMS), Nagpur
- ▶ Department of Management (DMIETR), Wardha

Medical Education - Datta Meghe Institute of Medical Sciences (Deemed University), Sawangi (Meghe), Wardha

CONSTITUENT INSTITUTIONS :

- ▶ Jawaharlal Nehru Medical College
- ▶ Acharya Vinoba Bhave Rural Hospital
- ▶ Sharad Pawar Dental College & Hospital
- ▶ Mahatma Gandhi Ayurveda College, Hospital & Research Centre
- ▶ Smt. Radhikabai Meghe Memorial College of Nursing
- ▶ The Florence Nightingale College of Nursing
- ▶ Ravi Nair Physiotherapy College

School Education - Meghe Group of Schools (MGS)

- Meghe PreSchool (MPS) • School Of Scholars (SOS)
- Vimaltai Tidke Convent & Junior College (VTC)

(Total 23 Schools Across Vidarbha Region)

FINISHING SCHOOL

ADCC INFOCAD LTD.

Our flowers bloom the brightest
because our roots go the deepest



Engineering
(YCCE)



Medical



Management



Schools



Finishing
School



ADCC
Infocad Ltd





OUR INSPIRATION

Hon'ble Shri. Dattaji Meghe

Ex. Member of Parliament (Lok Sabha & Rajya Sabha)

Chairman, Nagar Yuwak Shikshan Sanstha, Nagpur

Chairman, Shri Vidyarthi Sudhar Sangh, Nagpur

Chancellor, Datta Meghe Institute of Medical Sciences,
(Deemed University), Wardha

“Transformation through Health and Education” is the best way to describe Shri Dattaji Meghe, a man from humble origin, a visionary and an achiever. He worked hard in the last 4 decades towards bringing Education, Health, Development and Prosperity in Central India and influenced millions and transformed many into achievers in their own right.

Shri Dattaji Meghe is in active public life for more than 36 years and was the Member of Parliament in the Lok Sabha for the four terms (three terms consecutively) and Member of Parliament in Rajya Sabha for one term. As a minister in Government of Maharashtra, he ably handled different portfolios.

Under his able leadership, all the Institutions he established, have grown from Kinder Garden to PhD and have excelled in quality education and achieved Quality Assurance from the respective Accrediting Agencies. His preoccupation with superior quality transcends into education and insistence on getting the best faculty, well-equipped labs, etc. and providing best of amenities to the students. His vision has resulted in the evolution of Meghe Group, a multifaceted organization, branching out in Health Care, Realty & Infrastructure, Information Technology, Banking and Textile industry besides education.

Giving back to the society has been the hallmark of Shri Dattaji Meghe, in which he has been a father to the fatherless, a hope to the hopeless and bringing the underprivileged into the main stream of the society, giving them hope and dignity through his various Foundations and CSR initiatives.

In the midst of all the achievement, Education has been the Sheet Anchor of the Meghe Group, and Education, like a seed, has grown into the large enterprise in Maharashtra, catering to the need of human resources in India, and all across the globe.



Shri. Sagar Meghe

Secretary, Nagar Yuwak Shikshan Sanstha

Treasurer, Datta Meghe Institute of Medical Sciences

Ex MLC, Maharashtra State

Shri Sagar Meghe is a dynamic leader and personifies the concept of inclusive leadership in totality. He creates an atmosphere to stimulate diverse thinking and perspectives and to converge them towards the common goals.

He shoulders the responsibility of Qualitative and Quantitative development and expansion of the various Educational Institutions under the Meghe Group.

His commitment towards quality education has carved a niche for the Meghe Group of Institutions in Maharashtra and Central India, and has earned a sterling reputation in Education Sector and has been validated by various agencies like NABET, NBA & NAAC time and again.

He believes in progressive and innovative Learning & Development process that would bring transformational change in the Educational system that would be relevant with the time.



Shri. Sameer Meghe

Secretary, Datta Meghe Institute of Medical Sciences

Treasurer, Nagar Yuwak Shikshan Sanstha

MLA, Maharashtra State

Shri Sameer Meghe is a young and charismatic leader who believes that a nation is built by the youth of the country who are educated, determined and dedicated. He believes that education stimulates young minds and makes them Change Leaders to propel India into an economic powerhouse in the 21st century.

As the part of the leadership he is instrumental in creating the blueprint for the growth of the Meghe Group of Institutions and bringing them into reality.



Dr. Shekhar Bhole

CEO - Meghe Group of Institutions

BE, M Tech, Ph. D. (Civil)

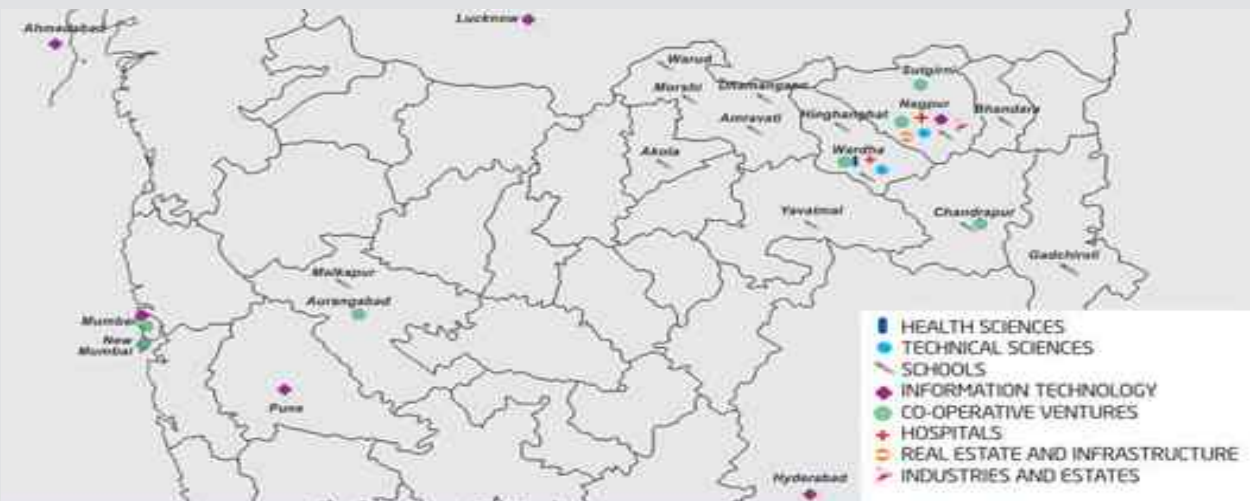
F.I.E., M.I.W.W.A., M.I.S.T.E.

Former Dean - Academic Matters, YCCE, Nagpur

Former Member of Faculty of Engineering and Technology, Nagpur University

Former Chairman, Institution of Engineers (India), Nagpur Local Centre, Nagpur

With the wealth of experience and leadership, Dr. Shekhar Bhole is responsible for the planned and coordinated development of the Technical and Management Institutions under the Meghe Group of Institutions.



MEGHE GROUP OF INSTITUTIONS

HEALTH SCIENCES (Deemed University))

- Medicine
- Dental
- Nursing
- Ayurveda
- Masters in Hospital Administration & Management
- Masters in Public Health
- Masters in Health Professional Education

TECHNICAL SCIENCES

- Engineering-4 (1 Autonomous)
- Polytechnic
- MBA
- Pharmacy

SCHOOLS - 23

- State Board
- CBSE
- IGCSE (Affiliated to Cambridge University)

INFORMATION TECHNOLOGY

ADCC Infocad Pvt. Ltd.

- GIS & Photogrammetry
- Channel Reseller to Autodesk, Mathwork, Digital Globe, Intergraph, Adobe
- Engineering Design Services
- Power Automation
- ADCC Academy-Softskill (as a Alliance Partner with Dale Carnegie Training India) & Hard skill Training

CO-OPERATIVE VENTURES

- Tirupati Urban Co-Operative Bank
- Textile Mill - BSWSS (Sutgiri)

HOSPITALS

Acharya Vinoba Bhave Rural Hospital

- Multi Speciality Tertiary Care Hospital
- Attached to DMIMS
- Capacity 1200 Beds

SDM Hospital

- The only Dedicated Neonatal & Pediatric Setup in Central India
- Capacity 100 Beds

SGM Hospital

- In Joint Venture with Wockhardt Hospitals at Nagpur
- Capacity 150 Beds

Ayurvedic Hospital

- Attached to Ayurvedic College at Wardha

REAL ESTATES AND INFRASTRUCTURE

Raghav Infradevelopers & Builders Ltd.

- Institutional Projects
- Shopping Complexes
- Commercial Projects

SMG Real Estates

Raghav Associates

- Integrated Townships
- Commercial & Residential
- Road Project
- Mining Project

INDUSTRIES AND ESTATES

Agro Based

- Horticulture
- Floriculture

Our Thought Leaders

National Academic Advisory Board

In view of the current education scenario Nationally / Globally, and Govt. Policies, for Quantitative and Qualitative expansion of Higher Technical Education in the Country, the Meghe Group's Engineering Institutions are keen to play a significant role in providing excellence in education by adhering to the national/international benchmark and become a role model for other institutions, Hence, an Academic Advisory Board is constituted from 2008 to guide the institutions towards excellence in education.



Dr. S. C. Sahasrabudhe
Former Director, DAIICT,
Gandhinagar



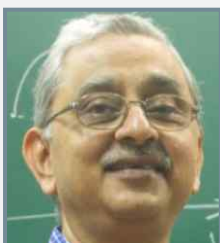
Prof. S.E. Chaudhari
President TIE, Nagpur



Shri. Manohar Paralkar
Adviser & Mentor,
Tata Motors



Dr. S.R. Wate
Chairman, Recruitment &
Assessment Board, CSIR,
New Delhi



Dr. U.A. Gaitonde
Professor, IIT, Mumbai



Shri. Arvin Kumar
(Dy) Center Head,
TCS, Nagpur



Dr. B.N. Choudhari
- Dy. Director & Member
- BoG, COEP, Pune



Dr. A.K. Darpe
Professor, IIT, Delhi



Dr. S.P. Untawale
Principal DMIETR,
Wardha, Member Secretary

MGI Training and Placement Department

Vision

Symboitic, Sustained Excellence in Training, Placement and Career Orientation.

Mission

- ▶ To assist the development of graduates with balanced set of technical skills, interpersonal skills and with a positive attitude to life.
- ▶ To act as a nodal agency in the Institution for forging technology. alliance between the Institute and the Industries.
- ▶ To act as a seamless conduit between the Industry and the Institute and provide quality technical manpower to suit every organizational need.

From MGI Training & Placement Office

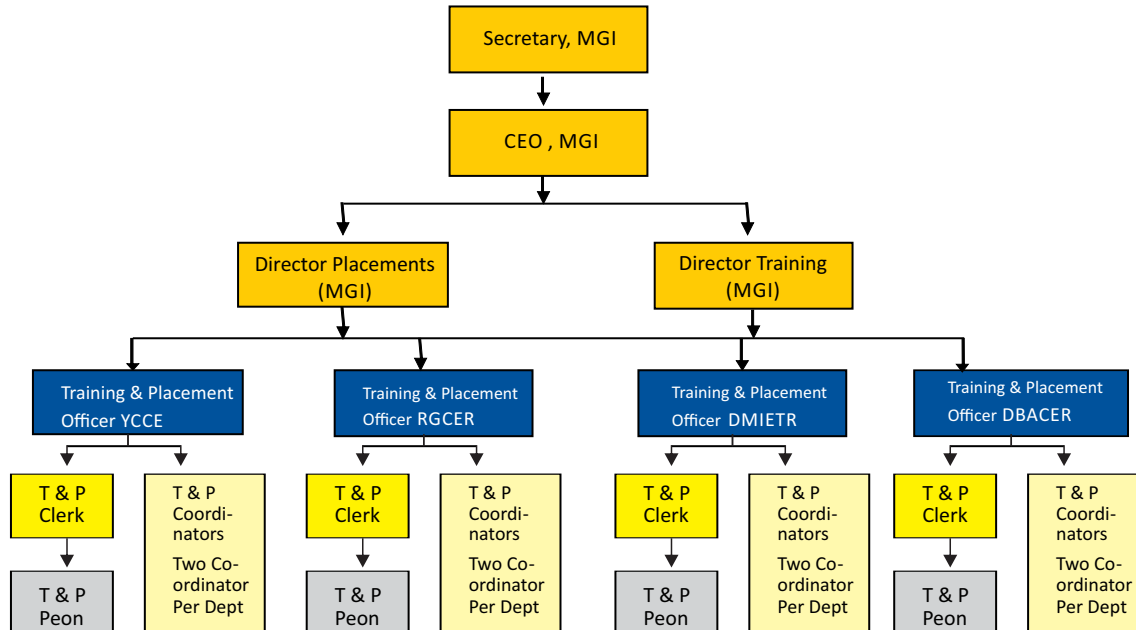
The MGI Training & Placement (T&P) department is the chief facilitator for the students to obtain the placements that best suit them and is primarily a liaison between Industry and the Institute.

The Training wing consistently researches and interacts with the recruiters to understand their expectations from prospective students and accordingly creates and executes the annual roadmap for training. The entire process of training unlike tradition systems, covers the essential techniques to solve logical and aptitude problems. It also opens up avenues to improvise on their conversational and oratory skills, personality and competency in strengthening the technical concepts while extending the application of the concepts in real time systems. By this process, they are enabled to satisfy the expectations of the industry.

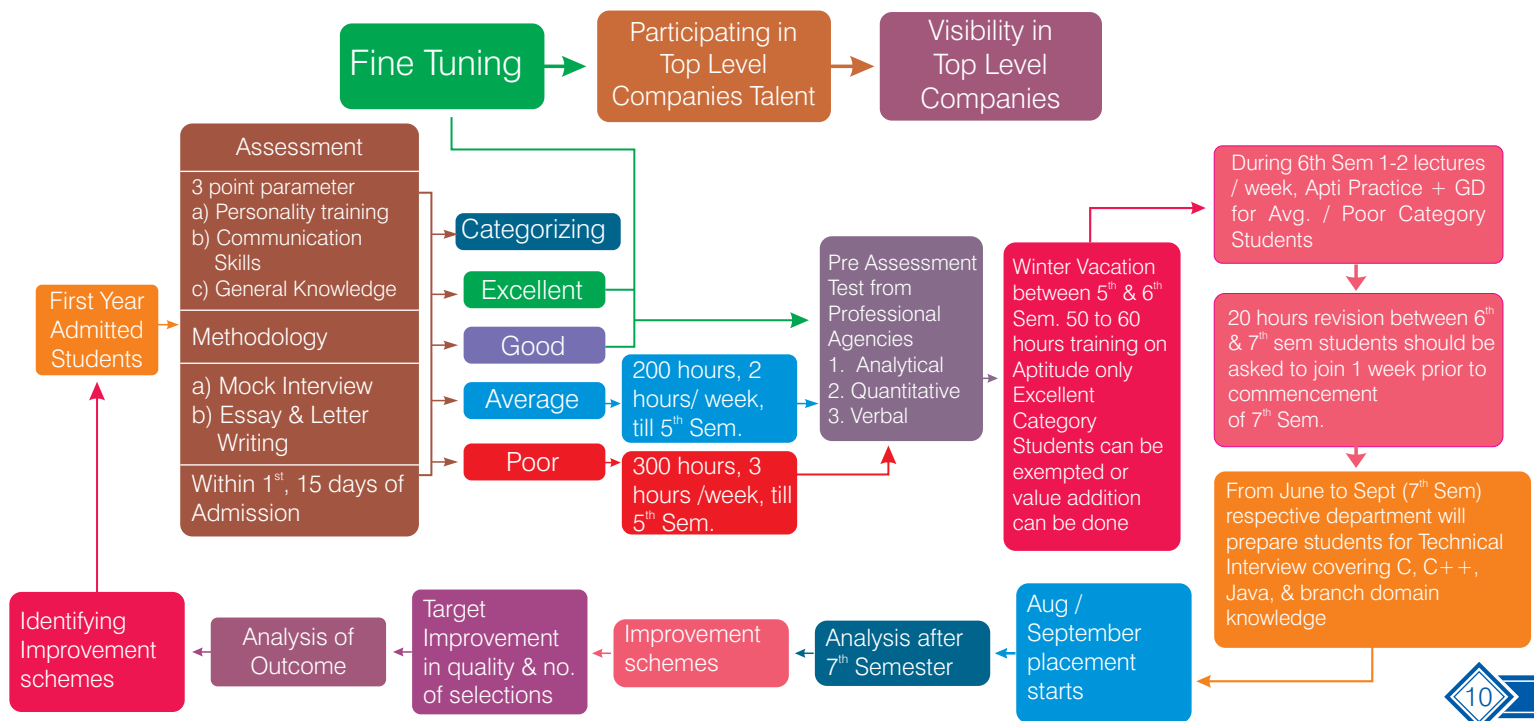
The placement wing of the department handles all aspects of campus placements for the graduating students at MGI . The Placement process is initiated with a clear focus on all levels of companies that are contacted and invited for the campus recruitment drive which matches all the academic levels of students. The department is well equipped with excellent infrastructure to support every stage of the placement process. Arrangement for Pre-Placement Talks, Interviews, Group Discussions, etc. are all handled by the staff at the office.

At MGI we take pride in ensuring Company officials who visit our campus hits a notable satisfaction level in terms of the campus recruitment process and students competency. We strive hard to maintain this tradition.

MGI Training and Placement Governance Chart



Employability Enhancement Program



Infrastructure / Facilities for Recruiters



Reception



Interview cabin



Board Room

- ▶ Auditorium, Seminar Hall and large Class rooms for Pre-Placement talks and written test, 700 students can appear for written test on a single floor
- ▶ 200 computers at a single place for conducting online test, overall 500 computers can be made available in single LAN
- ▶ Infrastructure Facility available to host pool campus upto 2000 students
- ▶ Air- conditioned cabins/rooms for Group discussions and Interviews
- ▶ High Speed Internet connection for online test- 30 mbps (leased line). Also available 10 mbps BSNL line.
- ▶ UPS and Generator backup
- ▶ Taxi for pickup and drop from Hotel/Airport
- ▶ Directors, TPO's, Faculty Co-coordinators and Students Volunteers facilitate the smooth operation of campus selection process.
- ▶ Warm Welcome and Hospitality.



Computer Lab for Online test



Centralized Computer Center Hall



Auditorium

Our Esteemed Recruiters

1	Accenture Ltd.	37	E-Zest
2	Adani Group	38	Fiserv
3	Adani Wilmar Ltd.	39	Fluor Daniel India Pvt. Ltd.
4	ADCC,Nagpur	40	Fujitsu
5	ADP	41	Future Group
6	Alacrity E Commerce Solutions Pvt. Ltd., Nagpur	42	GKN Sinter Metals Pvt. Ltd.
7	Amazon	43	GlobalLogic
8	Ambuja Cements Ltd.	44	GMR Hyderabad International Airport Ltd.
9	AMDOCS	45	GS Lab
10	Angloeastern Ship Management Limited	46	Hasan Juma Trading Co., Oman
11	Aristocrat Gaming	47	HCL TSS
12	Asahi Glass India Ltd.	48	Hilti (I) Pvt.Ltd.
13	Ashok Leyland	49	Hindalco Industries Ltd.
14	Benpour Technologies	50	Home First Finance Company (HFFC)
15	BHEA Technologies Ltd.	51	HSBC Software
16	Bhilwara Infotechnology	52	iNautix Technoloiges (I) Pvt. Ltd.(A BNY Mellon Co.)
17	Bosch Ltd.	53	Indian Air Force
18	BP Ergo Ltd.	54	Indian Army
19	Bristlecone	55	Indian Navy
20	Calsoft Labs	56	Indorama Synthetics Ltd.
21	Capgemini India Pvt. Ltd.	57	Indus Towers
22	CDC CRM Sol utions Pvt. Ltd.	58	InfoCepts
23	CMS IT	59	Info-stretch
24	Cognizant	60	Infosys
25	Crest Technologies	61	Jade Global Software Pvt. Ltd.
26	Cummins (I) Ltd.	62	Jhonson Controls (I) Ltd.
27	Cybage Software Pvt. Ltd.	63	JSW Ispat Ltd.
28	Cyronics Instruments Pvt. Ltd.	64	Kapilansh Dhatu Udyog (P) Ltd., Nagpur
29	Dhoot Transmissions	65	KEC International Ltd.
30	Diffusion Engineers Ltd. Nagpur	66	Kewill Ltd.
31	Ebix Software	67	Kirloskar Group of Companies
32	E-Clinical	68	KoneCranes
33	EMCO Ltd.	69	KPIT Technologies Ltd.
34	Epic Research	70	L & T Constructions Ltd.
35	Esense IT solutions	71	L & T Infotech Ltd.
36	Excellon Software	72	L&T Technology Services

Our Esteemed Recruiters

73	LANCO Vidharbha Thermal Power Ltd.
74	Larsen & Toubro Ltd.
75	LG Electronics
76	Mahindra & Mahindra Ltd.
77	Mahindra First Choice Wheels Ltd.
78	Maintec Technologies
79	Marvell Technologies Ltd.
80	Mecgale Pneumatics Pvt. Ltd.
81	Mediaocean
82	Meghe Group, Nagpur
83	MothersonSumi Systems Ltd.
84	Motif
85	Mphasis Ltd. (An HP company)
86	M-Power Solutions, Pune
87	Mu Sigma Business Solutions Pvt Ltd
88	Nagarjuna Construction Co. Ltd.
89	Nice Software Solutions
90	Norton Grindwell Ltd. (A Saint Gobain Company)
91	nVIDIA
92	Oracle
93	Persistent Systems Ltd.
94	Piaggio Vehicles Pvt. Ltd.
95	Prathamesh Engg & Management Consultants
96	Pristine Switchgears (I) Pvt. Ltd.
97	Quinnox Technologies
98	Ramkrishna IT Systems
99	Rane Holdings Ltd.
100	Reliance Power
101	RF Arrays Systems Pvt. Ltd.
102	Saama Technologies
103	SafeXpress
104	Schwing Stetter (I) Pvt. Ltd.
105	SIAE Microelettronica
106	Simplex Infrastructure Ltd.
107	Smart Data Enterprises (I) Ltd.
108	Softpark, Nagpur

109	Soma Enterprises
110	Sunflag Iron & Steel Co. Ltd.
111	Sunil Hi Tech Engineers Ltd.
112	Syntel India Ltd.
113	Tageu Tec India P. Ltd.
114	TAL Manufacturing Solutions Ltd.
115	TATA CMC
116	Tata Consultancy Services Ltd. (TCS)
117	Tata Elxsi Ltd.
118	Tata Power Ltd.
119	TBSS
120	Teach For India
121	Tech Mahindra Ltd.
122	Techint India Ltd.
123	Tecture Structures Pvt. Ltd.
124	Tega Industries Ltd.
125	TekLink India Pvt. Ltd.
126	Think & Learn (BYJU)
127	Thoughtworks
128	Torrent Power
129	Triveni Turbines Ltd.
130	Trust Systems & Software
131	TVS Motors Ltd.
132	Uttam Galva Steels Ltd.
133	Vedant Resources Inc.
134	Visa Steel Ltd.
135	Webonise Lab
136	Wind World India
137	Wipro Technologies Ltd.
138	Xoriant Solutions
139	Yodlee Infotech
140	Zensar Technolgoies Ltd.
141	ZS Associates
	and more....

MGI Student Development Initiatives :

Role Model Interaction Initiatives



In order to add a different facet to the personality of the students MGI has started the “Role Model Interaction Initiative” at MGI from 2010. Under this initiative eminent personalities from various walks of life are invited to have an interaction about their success journey and the ways they handle the problems of life. Dr. A.P.J. Abdul Kalam, Chetan Bhagat, Suhas Gopinath have interacted with MGI students in recent past

Industry Academia Conclave - 2017



Leaders from the following companies participated in giving insight to the students an interacting with them.

- TCS • Wipro Ltd. • IBM India • Aditya Birla Management Corporation • TATA Power • Hewlett Packard
- JSW Steel Coated Products Ltd. • Mercedes- Benz Research and Development India • Persistent Systems Ltd.
- Bain and Company • KPIT Technologies Ltd. • IIT Powai • Thought at Work • Webonise Software Solutions

MGI Student Development Initiatives

Industry Institute Partnership Cell

- ▶ Industry Institute Partnership Cell [IIP Cell] has been setup with a grant of Rs. 10 Lacs.
- ▶ IIP Cell facilitates student in the below mentioned Areas.
 - Industrial Training · Industrial Visit · Student project placement · Expert lectures
 - Career Orientation Programs · Industry certified course · Industry Academia Conclave

Internship and Training

- ▶ Training is the integral part of the study to make them aware about real world problems. Students are placed at various industries for 6 to 8 weeks under the supervision and guidance of respective industry personnel. The faculty carries out monitoring and evaluation regularly.
- ▶ Semester long Internship for all M. Tech. programs and B.E. Information Technology

Industrial Visit

- ▶ In each semester, industrial visits of the students with faculty members to BARC & other top industries are organized at various locations. The objective is to explore large-scale practical applications of theoretical aspects for the students.

Student Project Placements

- ▶ In final year, some group of students with faculty members carry out their project in association with industry. The project can be industry based or co-guide from industry and also individual co guide for UG / PG Projects.

Expert Lectures

- ▶ IIP Cell organizes expert lecture series during seminar or at the department level in coordination with student Forums. Such lectures familiarize the students and the faculty with latest industrial practices and their co-relation with the curriculum.

Employability Enhancetment Program

- ▶ Training is provided to students to enhance soft-skills, group discussion and aptitude test capabilities as well as interview techniques. Special training courses are organized for students and faculty by world renowned industrial organizations to make them conversant with the ever-changing industrial requirements. Motivational Talks by eminent Speakers for Students and Faculty are arranged. MGI has joint ventures with Top institutes like Dale Carnegie Institute, Wipro Mission 10X , Meghe Finishing School Etc.
- ▶ A 120 hours mandatory Campus Recruitment Training program with pre and post assessment by reputed assessment agencies is organized for soft skill development of all the MGI students.

Global Exposure

Interactive Tour of MGI students to Singapore

- ▶ Global Exposure tour for the MGI students are regularly conducted. This helps in making them globally competent.
- ▶ Students visited National University of Singapore (NUS), Nanyang Technological University (NTU), Management Development Institute of Singapore (MDIS) and industries like MacGreen Singapore Pvt. Ltd. and Harley Davidson Singapore Pvt Ltd. Students had a campus tour of the universities and studied projects of the students.
- ▶ Students interacted with the faculties and got to know about the various programs and opportunities offered to students in the universities.
- ▶ At MacGreen Students attended talk on pre-placement preparation, HR policies and expectation from the fresh Engineering Graduates and career planning. Students acknowledged that the tour had served its every purpose towards making them globally competent.

MGI Placements: - Few Memorable Moments



Students selected in TCS 2015-16



Students selected in TCS 2014-15



Students selected in Infosys 2013-14



Students selected in Wipro 2012-13

MGI Engineering Institutes

Yeshwantrao Chavan College of Engineering, Nagpur



www.ycce.edu

Rajiv Gandhi College of Engineering & Research, Nagpur



www.rgcer.edu.in



www.dbacer.edu.in

www.dmieter.edu.in



Dr. Babasaheb Ambedkar College of Engineering & Research, Nagpur



Datta Meghe Institute of Engineering, Technology & Research, Wardha



Yeshwantrao Chavan College of Engineering, Nagpur



MGI Flagship Institute



Dr. Uday P. Waghe
Principal, YCCE

About Us

Yeshwantrao Chavan College of Engineering is established in the year 1984. It is named in the memory of Late Shri Yeshwantrao Chavan, the great patriot who was the first Chief Minister of Maharashtra and the former Deputy Prime Minister of India.

YCCE is one of the premier college of engineering in the Vidarbha region of Maharashtra. The goal of institution is to provide excellent educational environment to the students at both undergraduate and postgraduate levels. The institute extends its expertise in engineering and technological requirements to various public and private sector organizations.

We aim to transform our students into responsible and resourceful leaders in their profession.

Highlights

33 years in Excellence in Education

Yeshwantrao Chavan College of Engineering (YCCE) is renowned for Engineering Education and Research. For over 33 years, it has successfully nurtured young engineering professionals, becoming a sought-after destination for students aspiring to higher technical education and placement in the competitive software and core industries. It offers a rare combination of respected scholars, international footprint and interdisciplinary studies

TEQIP & World Bank Funded

A premier institute, YCCE became one of the few selected well-performing colleges for Government of India's Technical Education Quality Improvement Program (TEQIP Phase I), funded by the World Bank. With the TEQIP financial aid, the Institution has created state-of-the-art infrastructure, laboratories, computational facilities, library etc. and received financial assistance of Rs. 8.41 cr.

First Autonomous College - Central India

YCCE has become the First private engineering college to acquire 'Autonomous' status in Central India. Under the new status, the first batch of students commenced their B.E. and M.Tech. courses from the academic session 2010-2011. Recently UGC peer team visited YCCE & granted 'Extension to Autonomy' for 6 years (2016-2022).

NBA Accreditation

B.E. Mechanical Engg., Civil Engg., Electrical Engg. and Electronics & Telecomm. Engg. programs are Accredited by National Board of Accreditation (NBA), New Delhi. Other programs are under process.

ISTE National Award 2014

Received ISTE National Award 2014 for being the Best Private Engineering College in the country.

Among top 150 Engineering Institutions - NIRF Ranking 2017-18

Ranked amongst Top 150 Engineering Institutions all over India including IITs, NITs, Govt. & Autonomous Engineering Institution by NIRF, MHRD, Govt. of India, 2017-18.

Best Project Award

Shortlisted among 100 colleges in the country by TCS for "Best Student Award" & "Best Project Award"

93 rd Rank - NIRF Ranking 2016-17

All India 93rd rank amongst IITs, NITs, Govt. & Autonomous Engineering Institution by NIRF, MHRD, Govt. of India, 2016-17

Self Financed

YCCE is rated as one of the few well-performing colleges for higher technical education in the self-financed category

Grade 'A' by Govt. Of Maharashtra 2002-03

Awarded 'A' Grade by the Government of Maharashtra in the year 2002-2003

Quality Assurance

Quality assurance through Accreditation and Re-Accreditation of UG & PG programs by National Board of Accreditation (NBA), New Delhi

200+ Research Programs

All technical departments of the Institution are recognized as a center for Higher Learning and Research for M.E. by Research and Ph.D. by RTM Nagpur University. About 200 scholars have registered for research programs

Grade 'A' by NAAC

Accreditation with 'A' Grade by UGC National Assessment and Accreditation Council (NAAC), Bangalore

3.5 Cr funding

In last 5 Years, the institute has received financial assistance of Rs. 3.5 Cr. from various funding agencies like AICTE, DST, UGC etc.

TiE Campusreneur Program

TiE Campusreneur Program to imbibe Entrepreneurship Skills amongst students

Innovation Gallery

Innovation Gallery for displaying innovative UG/PG project work of students

Industry Institute Partnership Cell (IIPC)

IIPC has received a grand of Rs. 12.40 Lakhs from AICTE under which IT orientation programs & industrial visits are organized

UG Programmes Offered

UG Full Time Courses - B.E. (4 years Semester Pattern) First Shift

Sr.No.	Programme	Intake
1	Civil Engineering	180
2	Mechanical Engineering	180
3	Computer Technology	120
4	Electronics Engineering	120
5	Electronics & Telecommunication Engineering	120
6	Electrical Engineering	120
7	Information Technology	60

UG Full Time Courses (4 years Semester Pattern) Second Shift

Sr.No.	Programme	Intake
1	Electronics & Telecommunication Engineering	60
2	Electrical Engineering	60

M.Tech Programmes Offered

Sr.No.	Programme	Intake
1	Structural Engineering	25
2	Production Engineering	25
3	CAD/CAM	18
4	Electronics Engineering	25
5	VLSI Design	18
6	Integrated Power System	18
7	Computer Science & Engineering	24
8	Communication Engineering	24
9	Information Technology	18
10	Environmental Engineering	18

PG Full Time Courses (2 years Semester Pattern) Second Shift

Sr.No.	Programme	Intake
1	Computer Science & Engineering	24
2	VLSI Design	24

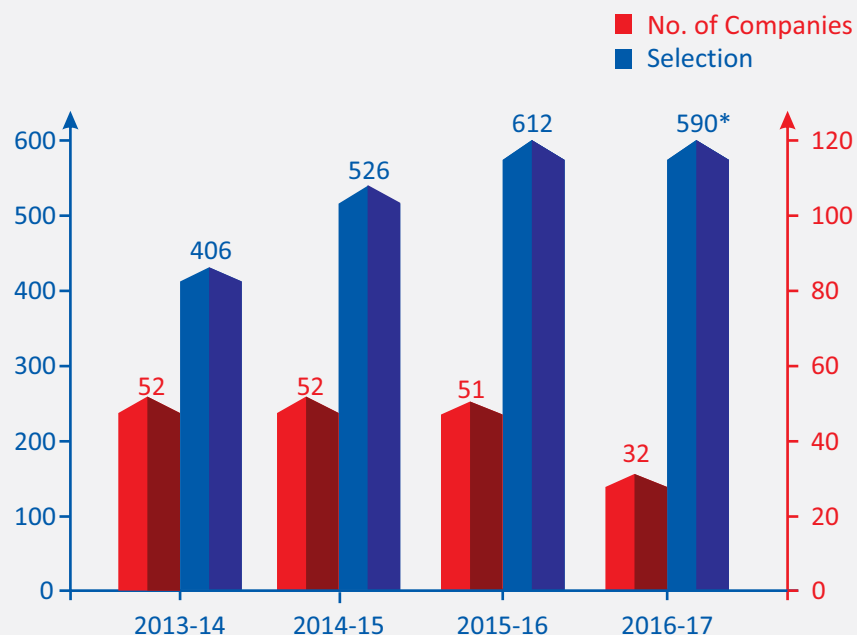
Facilities for Campus Recruitment

- ▶ Large Auditorium for Pool Campus
- ▶ Rooms for GD and Personal Interviews
- ▶ Seminar Halls for individual campus recruitment drive
- ▶ Hotel and Guest House facilities for the Guests
- ▶ Computers Labs to conduct online assessments up-to 300 students at a time
- ▶ T&P Faculty Coordinators and Student Coordinators Team for assisting the HR in coordination for the drive



YCCE Placements

Students placed No. of Companies vs Offers



*Placement process of 2016-17 is still in process

The department has an excellent track record in placing the students in reputed organizations. All the reputed organizations including MNCs visit the College for campus recruitment. The students, in turn have made the college feel proud by excelling in their roles. It has been the department's endeavor to develop competent human resources with necessary technical skills and responsible citizens for the society. We take feedback from industries regarding designing/ changing of curriculum so that high quality is achieved in technical education and professional guidance imparted at this institute.



Selected Students of 2016-17 batch

Premier Industries : 'Recognitions from and Interaction with'

- TCS:**
 - Shortlisted YCCE in 100 colleges in the Country for “Best Student Award” and “Best Project Award”
 - Accreditation
 - ERP implementation (MoU signed at group level)
- WIPRO:**
 - Declared YCCE one of the 25 Centres of Excellence
 - Mission 10X program
 - Accreditation
- IBM:**
 - Centre of Excellence
- Capgemini:**
 - Accreditation
- Infosys:**
 - Industry electives
 - Campus connect program
- CII:**
 - Accreditation
- Mahindra:**
 - Igniters Quotient
- ADCC:**
 - Value added courses
- Siemens:**
 - Joint proposal under NAFETIC to AICTE Center for Excellence.



Rajiv Gandhi College of Engineering & Research, Nagpur



RG CER

About Us



Dr. Manali Kshirsagar
Principal, RG CER

- **Affiliations** : Approved by All India Council for Technical Education (A.I.C.T.E), New Delhi, an apex body of the Government of India. Recognized by the Directorate of Technical education (DTE), Government of Maharashtra. Affiliated to Rashtrasant Tukdoji Maharaj (RTM) Nagpur University, Nagpur. All eligible programs Accredited by NBA, New Delhi. RG CER is one of the Youngest Engineering Institutions which has its all eligible UG programs NBA Accredited.
- **Major Recognitions and Facilities** : RG CER won "STAR NEWS" award for "Best Upcoming Engineering College in India" in Feb 2010. Winner of RTMNU cultural event "YUWARANG - 2017". Excellent academic results in RTM Nagpur University examinations. Established on 10 acres of land having built-up area of 19,630 sqm. State-of-the-art infrastructure and laboratory facility. Computerized library with rich collection of books, journals and book bank scheme. Highly Qualified and Experienced faculty members. Faculty members having membership of professional societies like IE (I), IEEE and ISTE. Progress and attendance of the students is monitored closely and informed to the parents regularly through Teacher Guardian scheme. .

Salient Features

- ▶ Established in 2008, RGCER is the Youngest Engineering College in Nagpur having NBA Accreditation for all eligible programmes
- ▶ "Best Upcoming Engineering College" Award by Star News in 2010.
- ▶ Highest placements among all RTMNU affiliated engineering colleges established in the year 2008.
- ▶ 1st college to provide International placement among all RTMNU affiliated Non-Autonomous Engineering colleges established in the year 2008.
- ▶ 1st college to provide abroad internship among all RTMNU affiliated Non-Autonomous engineering colleges established in the year 2008.
- ▶ Winners in RTM Nagpur University Cultural competition "Yuvarang" in 2017 and 1st Runners-up for thrice in 2014, 2015 and 2016.
- ▶ Established E-Yantra Lab, funded by National Mission on Education through ICT (NMEICT), Ministry of Human Resources Development (MHRD), Government of India.
- ▶ MOU's with Leading Universities in USA, UK, Malaysia & top Indian Institutions
- ▶ State-of-the-art infrastructure and laboratory facility
- ▶ CRT classes with special focus on Aptitude, Personality Development, GD & PI
- ▶ Impetus on Co-Curricular, Extra Curricular @ Sports Activities
- ▶ Annual Technical Conferences & Workshops for Faculty and Students
- ▶ Guest Lecture by Experts from Industry and Top Institutions
- ▶ Interaction with Role Model like Dr. APJ Abdul Kalam, Chetan Bhagat & Others.

PROGRAMS OFFERED & INTAKE CAPACITY FOR ACADEMIC SESSION 2017-18

B.E.: 4 Yrs. Semester/CBS Pattern

M.TECH.: 2 YRS. SEMESTER PATTERN

Under Graduate Programs (UG) - B.E. CSE, IT, ETX & ETC are accredited by NBA

Program	Intake
Electronics & Telecomm. Engineering (ETC)	120
Computer Science & Engineering (CSE)	120
Electrical Engineering (EE)	120
Information Technology (IT)	60
Mechanical Engineering (ME)	60
Civil Engineering (CE)	60

Post Graduate Programs (PG) - M.Tech.

Program	Intake
Computer Science & Engineering [CSE]	18

Student Development Programs

- ▶ English Speaking & Writing Program as required by the Industry
- ▶ Domain Specific Training like JAVA, Cloud Computing, C++ , Engineering Design, .NET, MATLAB, CATIA, PRO-E etc
- ▶ Employability Assessment from AMCAT & targeted training
- ▶ Employability Enhancement Training Program (Aptitude, GD & Interviewing skills)
- ▶ Special Classes of C & C++ for Non CSE/IT Students.
- ▶ Industrial Visits for Hand-on experience business and industrial realities
- ▶ Encourages students to take up research based projects from Industries

Facilities for Campus Recruitment

- ▶ Large Auditorium for Pool Campus
- ▶ Rooms for GD and Personal Interviews
- ▶ Seminar Halls for individual campus recruitment drive
- ▶ Hotel and Guest House facilities for the Guests
- ▶ Computers Labs to conduct online assessments up-to 300 students at a time
- ▶ T&P Faculty Coordinators and Student Coordinators Team for assisting the HR in coordination for the drive



International Placement



Mr. Shubham Sagulale, Hasan Juma Backer,
Oman, Muscat

Abroad Internship



Mr. Kapeel Sable, Medelanes GMBH, Germany.

Our Prominent Recruiters



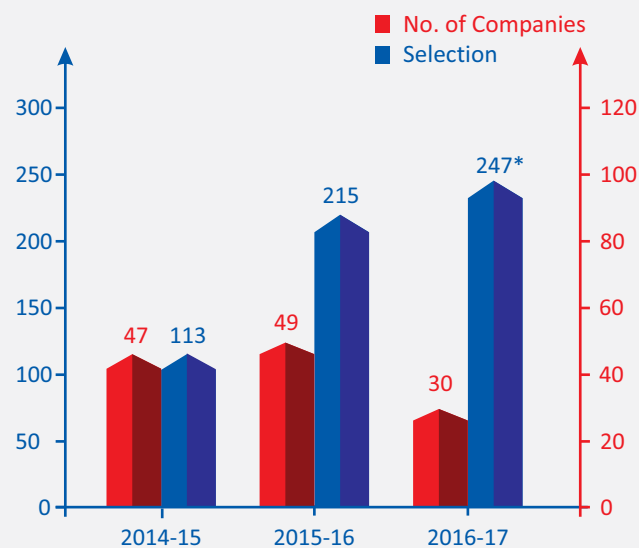
Placed Students



RG CER T&P Team



RG CER Placements



*Placement process of 2016-17 is still in process



Datta Meghe Institute of Engineering, Technology & Research, Wardha



DMIETR

About Us



Dr. S.P. Untawale
Principal, DMIETR

Datta Meghe Institute of Engineering, Technology & Research [DMIETR] was established in 2008 with a vision to make an indelible mark in the field of engineering education & research. Named after the great visionary, Hon. Shri. Dattaji Meghe, DMIETR is situated in Wardha, a city which has its name etched in the books of History for its affiliation to the greatest leaders of the world, Mahatma Gandhi & Vinoba Bhave. In a short period of Nine years, DMIETR has created an innovative education & research environment. It has developed itself into an institution of quality & excellence in the field of technical education in the region. As a centre of learning dedicated to education, research & service, DMIETR maintains an environment of academic excellence & intellectual competence. As per the Strategic Growth Plan of the Institution, DMIETR will be establishing a Center of Excellence in the domain of Bio-Medical Engineering and Mechanical Engineering.

Datta Meghe Institute of Engineering, Technology & Research is located in a 15.2 acre campus in Sawangi (Meghe), Wardha about 80 kms from Nagpur, Maharashtra, India which is the geographic centre of India. Housed in two separate blocks [Administrative & Academic] in a total built up area of 21914.55 sq.m., DMIETR has a modern architectural ambience. It is located away from the hustle and bustle of the city amidst serene surroundings in a self sustaining campus which has all the facilities such as Bank, Post Office, Shopping Complex, Temple, Ultra modern gymnasium and above all, an excellent academic ambience. It is very well connected by road, rail and air (via Nagpur) to all the major cities in the Country.

Salient Features

- ▶ Two UG programs i.e. Electronics & Telecommunication Engineering and Electronics Engineering are re-accredited by NBA for the period of one year i.e. up to 30/06/2017
- ▶ Institution is accredited by NAAC with CGPA of 2.50 on four point scale at B grade & valid up to March 28, 2021
- ▶ Planning done for NBA accreditation for remaining courses.
- ▶ The institution is a Remote centre of IIT, Bombay & Kharagpur for online courses under NMEICT
- ▶ Institution has IIT Bombay Akash Lab & e-Yantra Lab
- ▶ Innovative projects based on the thrust area of Bio-medical Engineering & projects helpful for agricultural sector are encouraged
- ▶ Academic & Activity calendar is strictly followed

UG Program Offered

Sr.	Degree Courses (UG) B.E.	Intake
1	Electronics & Telecommunication Engineering (NBA Accredited)	60
2	Information Technology	60
3	Computer Science & Engineering	60
4	Mechanical Engineering	120
5	Electrical Engineering	120
6	Civil Engineering	60

Sr.	Degree Courses (PG)	Intake
1	M.B.A. [Master of Business Administration]	60
2	M.Tech [Electronics & Communication]	24

Student Development Programs

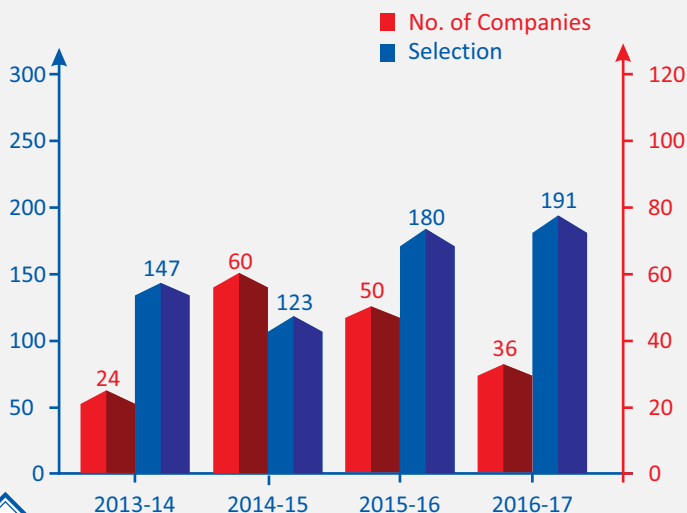
- ▶ English Speaking & Writing Program as required by the Industry
- ▶ Domain Specific Training like JAVA, Cloud Computing, C++ , Engineering Design, .NET, MATLAB, CATIA, PRO-E etc
- ▶ Employability Assessment from AMCAT & targeted training
- ▶ Employability Enhancement Training Program (Aptitude, GD & Interviewing skills)

Facilities for Campus Recruitment

- ▶ Large Auditorium for Pool Campus
- ▶ Rooms for GD and Personal Interviews
- ▶ Seminar Halls for individual campus recruitment drive
- ▶ Hotel and Guest House facilities for the Guests
- ▶ Computers Labs to conduct online assessments up-to 300 students at a time
- ▶ T&P Faculty Coordinators and Student Coordinators Team for assisting the HR in coordination for the drive



DMIETR Placements



Placed Students



Our Prominent Recruiters





Dr. Babasaheb Ambedkar College of Engineering and Research, Nagpur



DBACER

About Us



Dr. V. H. Tatwawadi
Principal, DBACER

Dr. Babasaheb Ambedkar College of Engineering and Research (DBACER) was established in 2008 under the Chairmanship of Hon'ble Shri Dattaji Meghe. The college was started initially with four branches under the aegis of Meghe Group with an aspiration to prepare graduates to become outstanding professionals characterized by integrity and social responsibility with a globally competitive era. From the inception since 2008, our effort has been to educate, empower and enlighten the students. DBACER has plans to excel in the field of automation and manufacturing and to be number one institute in this region.

It was renamed in Dec 2011 after Dr. Babasaheb Ambedkar, a great leader and writer of Indian Constitution as Dr. Babasaheb Ambedkar College of Engineering and Research (DBACER), formerly known as Shri Vidyarthi Sudhar Sangh college of Engineering & Research (SVSS).

This college is constructed in 10 acres campus at Wanadongri, Hingna Road, 15 Km away from Nagpur Railway station. It is housed in four separate blocks with total built up area of 18986 Sqm. It is Un-aided College and fee structure is governed by Fees Regulating Authority, Govt. of Maharashtra from time to time. DBACER is located amidst composed surroundings & has a modern architectural ambience and state of the art infrastructure which characterizes with unique buildings in Nagpur city.

Salient Features

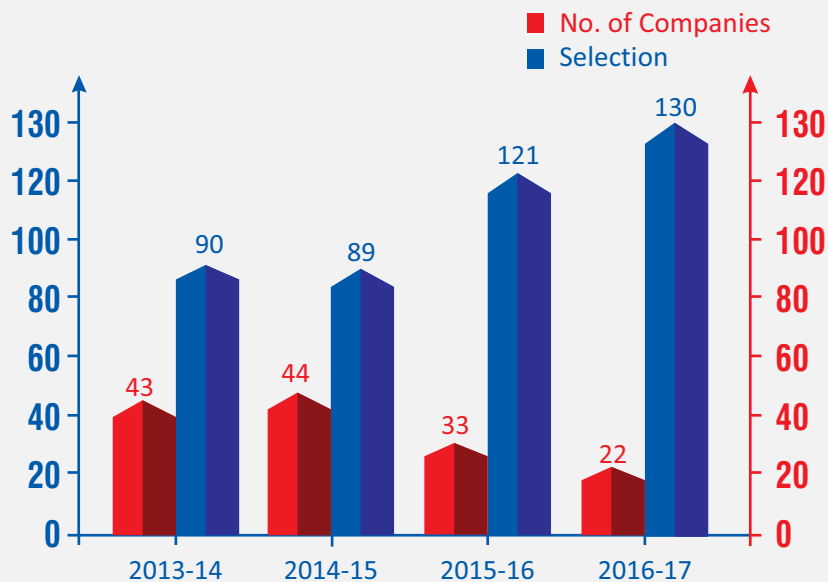
- Established in 2008
- Approved by AICTE
- Recognized by Govt. of Maharashtra Affiliated RTM Nagpur University
- Consistently Producing University Rank Holders
- Prize Winners in Paper Presentation at IITs & other Top Institutions
- MOU's with Leading Universities in USA, UK, Australia, Malaysia and top Indian Institute
- Interactions with Role models like Dr. APJ Abdul Kalam, Chetan Bhagat and others.
- Cutting Edge Technology Equipments
- Campus Recruitment Training (CRT) to Enhance Employability. It covers Training on Aptitude, Personality Development, GD & PI
- Impetus on Co-Curricular, Extra Curricular & Sports Activities
- Annual Technical Conferences & Workshops for Faculty & Students
- Guest Lectures by Experts from Industry & Top Institutes
- Outstanding Results since inception.

PROGRAMS OFFERED & INTAKE CAPACITY FOR ACADEMIC SESSION 2017-18

Under Graduate Programs (UG) - B.E.

Program	Intake
Computer Science & Engineering	60
Mechanical Engineering	180
Electrical Engineering	60
Civil Engineering	60

DBACER Placements



Placement Record & Companies Visited



DBACER T&P Team



ECO Kart 2017

Facilities for Campus Recruitment

- ▶ Large Auditorium for Pool Campus
- ▶ Rooms for GD and Personal Interviews
- ▶ Seminar Halls for individual campus recruitment drive
- ▶ Hotel and Guest House facilities for the Guests
- ▶ Computers Labs to conduct online assessments up-to 300 students at a time
- ▶ T&P Faculty Coordinators and Student Coordinators Team for assisting the HR in coordination for the drive



Our Esteemed Recruiters



and many more...

Alumni

With Top Multinational IT Companies



Prasanjeet Das
Hardware EDA Professional
Cadence Design Systems,
USA



Sanjeev Kak
Vice President,
Product Development
Oracle, USA



Pisyuh Sagdeo
Staff Engineer,
SSD System design
at WD, USA



Vidula Sayankar
CT 1997
Zebra Technologies
USA



Amit Mardikar
CT 1998
Global Sales Finance
Apple USA



Arghaya Palit
CE 1999
Senior Sales
Manager
Oracle, USA



Rajiban Ghoshal
CE 1999
Asst VP, Polaris
Financial Tech Ltd,
NY, USA



Ajay Kumar Chava
ME 1994
HCL America,
North America Head
Oracle Managed Services

With Top level Assignments in Private Sector



Prasad Holay
Strategy Analyst
Lloyds Banking Group,
UK



Nidhi Maheshwari
EE 1996
Senior Director-Mkt
Grant Thornton



Karthik Krishnamurty
CT 1997
VP-BNY Mellon
New Jersey USA



Sachin Kediya
EL 2004
Lead Paranoid Yahoo!
Department of Defense



Manish Amte
EE 1993,
GM -Journals &
e-products Cambridge
University Press



Hitesh Thakkar
BI Architect and Technical
Lead Dell Global Analytics
Bangaluru



Manish Grover
ME 1991
Director-Synergy Global
Resources Ltd,
Singapore Pte



Sudha Rao
Vice President,
Mercedes-Benz
Research and Development
India



Alumni Student Interaction in Industry Academia Conclave

Campus Life at





MGI Training & Placement Directors



Prof. Jawed A. Shaikh
Director Placements

Prof. Mahesh Pawar
Director Training

MGI Training and Placement Officers :



Mr. Neeraj Wakhare
T & P Officer, YCCE



Dr. Tushar Somnathe
T & P Officer, DMIETR



Mr. Anuj Rai
T & P Officer, RGCER



Mr. Ajay Phillips
T & P Officer, DBACER

Contact for Assistance :

Prof. Jawed Sheikh
Director Placement
director_placement@ycce.edu
+91 8698 853 431

Prof. Mahesh Pawar
Director Training
director_training@ycce.edu
+91 9049 990 514

Mr. Neeraj Wakhare
Training & Placement Officer, YCCE
yccetpo@gmail.com
+91 9850 386 670

Dr. Tushar Somnathe
Training & Placement Officer, DMIETR
tusharsomnathe@yahoo.com
+91 8007 223 646

Graduation Day Ceremony





Waiting for you

We Are Looking Forward To A Mutually Beneficial
And Long Lasting Relationship With
Your Esteemed Organization !!

Thank you

Corporate Office:

Nagar Yuwak Shikshan Sanstha, Atrey Layout, Pratap Nagar, Nagpur - 440 022 (M.S.) India

Phone : +91-712-2249462 Email : mgi@mginagpur.com

Website : www.mginagpur.com